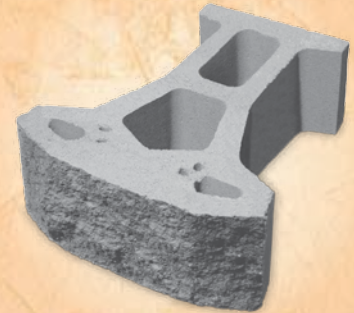
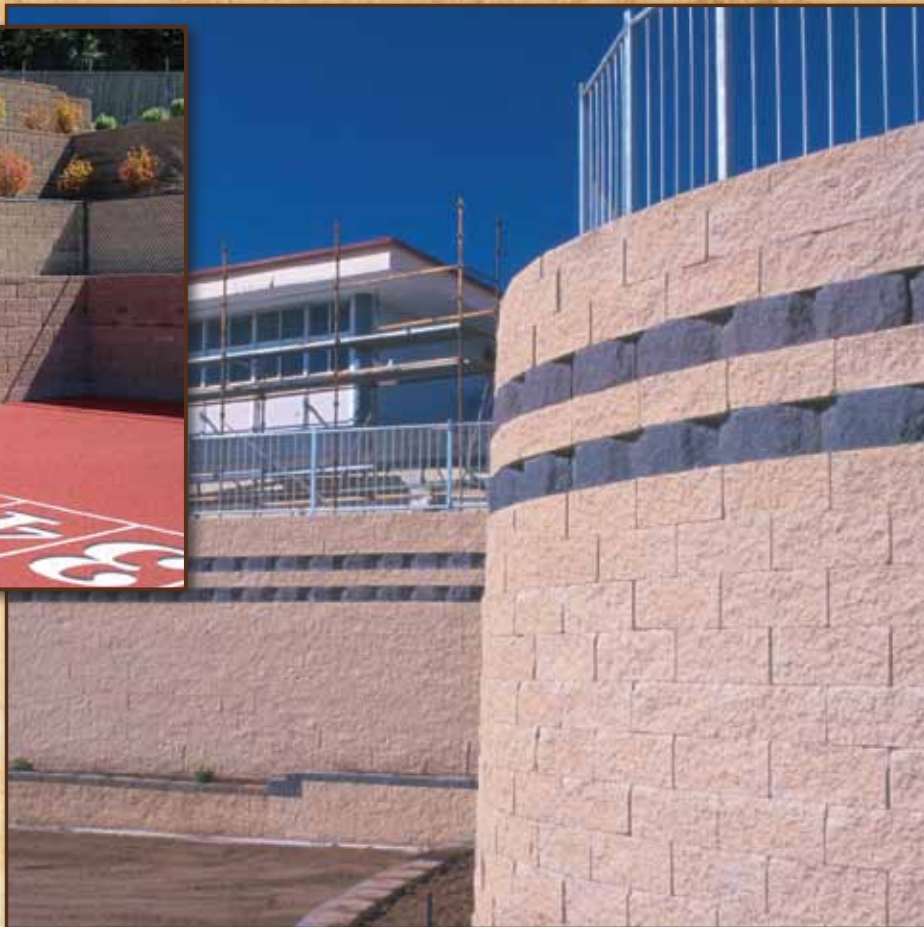


KEYSTONE STANDARD UNIT

Keystone's Standard products provide improved design features that contractors and specifiers are sure to appreciate. Larger open core space in the center of the unit ensures sufficient fill placement, reduces overall unit weight for ease of handling, and enhances connection strength with geosynthetics.



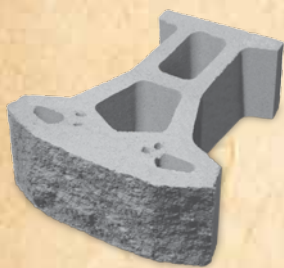
KEYSTONE®
STANDARD



Keystone Standard units are made of high-strength, low absorption concrete for long lasting structures. All structural units are interconnected using high strength fiberglass pins for strong shear connection. The connecting pins allow for ease of unit alignment and a secure positive mechanical connection with soil reinforcement materials. Keystone's patented pin system is the critical difference providing the safety and security of a structural retaining wall solution.

KEYSTONE STANDARD UNIT

8" h x 18" w x 21" d
92-95 lbs.



Tri-plane hardsplit



Straight face hardsplit

KEYSTONE PIN

5 1/4" w x 1/2" d



www.keystonewalls.com

Keystone Retaining Wall Systems, Inc. • A CONTECH Company
4444 West 78th Street • Minneapolis, MN 55435
(952) 897-1040 • www.keystonewalls.com

©2011 Keystone Retaining Wall Systems, Inc. Patents Pending.

